

Pupils eligible for pupil premium, two-year funding and free school meals

This spider chart shows the progress of children eligible for pupil premium, free school meals (FSM) or two-year funding from September 2022 to July 2023.

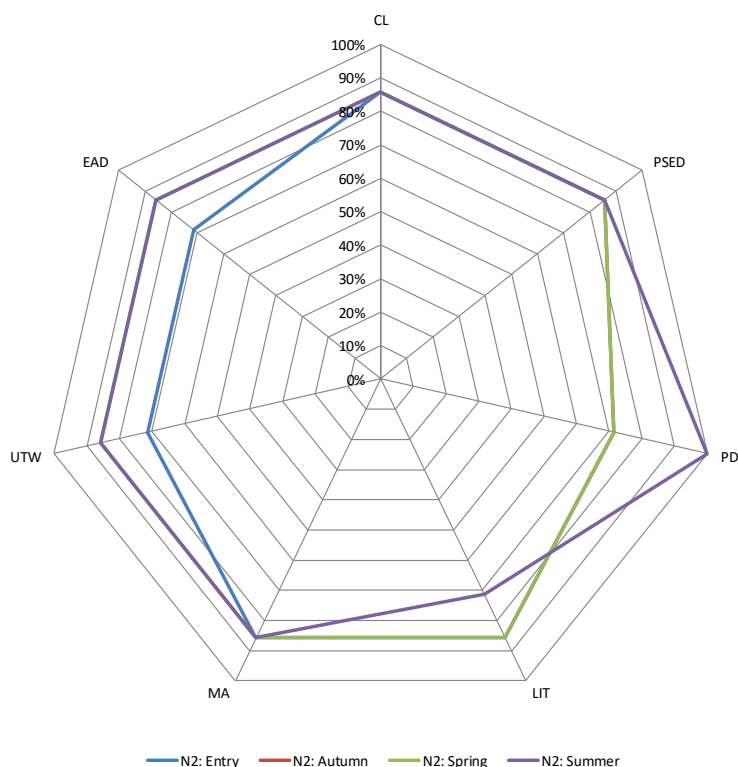
Tracker+

Year: N2

Group: PP



% of pupils working at ARE in N2 (Group: PP)



Key: ARE= age related expectations

PSED=personal, social and emotional development

PD=physical development

MA=maths

CL=communication and language

UTW=understanding the world

LIT=literacy

EAD=expressive arts and design

85 % of pupil premium, V2 and FSM children finished at or above age-related expectations in the prime areas of learning, expressive arts and design and maths, 100% in physical development and 70% in literacy.

We only assess pupils once during the Autumn term, so the red line doesn't show. Please note that the green line sits under the purple line for some areas of development.

Pupil premium progress

Progress of pupils eligible for pupil premium, two-year funding and free school meals

0 (0%)		2 (29%)		0 (0%)		1 (14%)		0 (0%)		0 (0%)		0 (0%)		0 (0%)	
6 (86%)		6 (86%)		6 (86%)		6 (86%)		5 (71%)		7 (100%)		6 (86%)		6 (86%)	
1 (14%)		1 (14%)		1 (14%)		1 (14%)		2 (29%)		0 (0%)		1 (14%)		2 (29%)	
N2: Entry	N2: Summer	N2: Entry	N2: Summer	N2: Entry	N2: Summer	N2: Entry	N2: Summer	N2: Entry	N2: Summer	N2: Entry	N2: Summer	N2: Entry	N2: Summer	N2: Entry	N2: Summer
CL		CL		PSED		PSED		PD		PD		LIT		LIT	
MA		MA		UTW		UTW		EAD							
2	At	2	At	2	At	2	At	2	At	2	At	2	At	2	At
2	At	3	Above	2	At	2	At	2	At	2	At	2	At	2	At
2	At	2	At	2	At	2	At	2	At	2	At	1	Below	2	At
1	Below	1	Below	1	Below	1	Below	1	Below	2	At	1	Below	1	Below
2	At	2	At	2	At	2	At	1	Below	2	At	2	At	2	At
2	At	2	At	2	At	2	At	2	At	2	At	2	At	2	At
2	At	3	Above	2	At	3	Above	2	At	2	At	2	At	2	At

Two pupils in this group made better than expected progress in communication and language, one pupil made better than expected progress in personal, social and emotional development, two pupils made better than expected progress in physical development. All but two pupils left nursery school at or above age-related expectations in all areas. One pupil left with below age-related expectations in all areas but made progress against the celebratory checkpoints.